

# Cool/td



## Active Cool-Container: Heating & Cooling System Unicooler – RAP (LD9)

The Unicooler, the new highly-developed air cargo container with a sophisticated ventilation system and integral large rechargeable accumulators, regulates the temperatures within the cargo compartment of the unit by using dry ice (concealed in separate dry ice bunker) as cooling energy source in combination with an electrical heating and permanent air circulation.

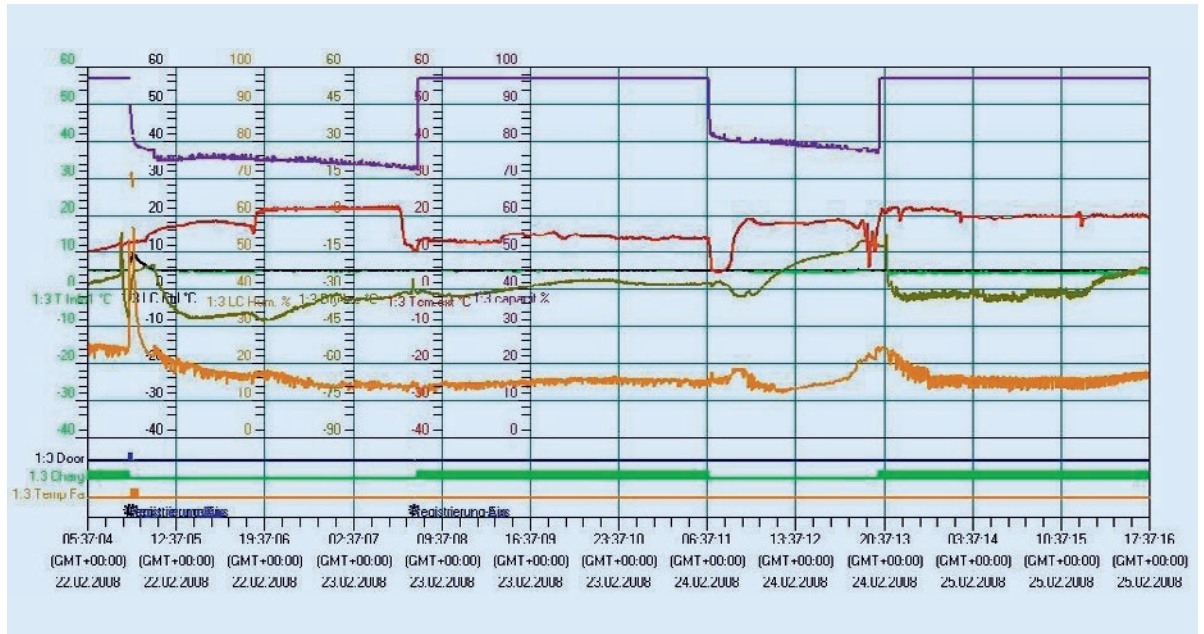
The system is driven by an external temperature sensor and additional internal temperature sensors for the freight compartment in order to maintain the required temperature range.

<b>Technical specification:</b>		
Internal temperature range settings	-20 °C to +30 °C	-4 °F to +86 °F
External dimensions (L x W x H)	3175 x 2235 x 1615 mm	125 x 88 x 63 in
Internal dimensions (L x W x H)	2900 x 2063 x 1445 mm	114 x 81 x 56 in
Internal dimensions (from chamfer)	2544 x 2063 x 1445 mm	100 x 81 x 56 in
Max. internal loading dimensions for freight (L x W x H)	2750 x 2023 x 1370 mm	108 x 79 x 53 in
Max. internal loading dimensions for freight (from chamfer)	2420 x 2023 x 1350 mm	95 x 79 x 53 in
Effective loading volume (m <sup>3</sup> /cu.ft)	7,62 m <sup>3</sup>	269 cu.ft
Max. ICE bunker capacity (when using block ice)	320 kg	705 lbs
Tare weight	796 kg	1753 lbs
Max. gross weight (incl. dry ice)	6033 kg	13300 lbs
Max. net weight	5237 kg	11547 lbs
Power supply	Operated by 12 / 24 V airworthy accumulators Ground system: 110 / 220 V connector	
Accumulator loading time (from 0 to 100 %)	Approx. 8 hrs	
Autonomous running time (on accumulators in a typical scenario)	Approx. 120 hrs	
Data recording	Continuous recording of operation data	



**Lufthansa Cargo**  
Networking the world.

## Data Recording: Unicooler – RAP (LD9)



### Continuous recording of operational data such as:

- Start and stop of operations
- Internal temperature
- Ambient temperature
- Temperature out of range during operation
- Internal humidity
- Opening of doors during transportation
- Power supply and battery charging times
- Temperature recordings of dry ice bunker



### Contact information:

If you require more information on Lufthansa Cargo's temperature-controlled services please contact your Lufthansa Cargo sales office, or visit us in the internet at [www.lufthansa-cargo.com](http://www.lufthansa-cargo.com)